



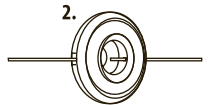
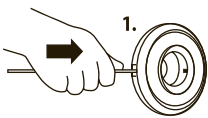
**STOP THE FRUSTRATION!**

## Replacement for Curved and Straight Shaft Trimmers

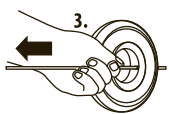


Quick loading

Quick and easy loading of line...



...and removal of line.



- Load line in just seconds
- Uses .095" to .155" trimmer line
- Fits most trimmers and brushcutters
- OREGON® Part Number 55-413
- Replaces Oregon® Kwik Loader® (55-401-0)



**WARNING:** Serious injury can occur if this trimmer head is not installed and used according to instructions in the operator's manual for your trimmer. Injury to operators and bystanders can occur from the rotating head or flying debris. Wear eye, face, body and leg protection. Keep bystanders at least 50 ft (15 m) away. Do not operate without cutting attachment shield in place.

For more information on these and other Oregon® products, contact your authorized Oregon® distributor, or:

**OREGON®, BLOUNT, INC.** PO Box 22127 · Portland, OR, U.S.A. 97269-2127  
 Phone: 503-653-8881 Fax: 503-653-4201 Web: oregonchain.com

**IN CANADA: OREGON DISTRIBUTION LTD.** 505 Edinburgh Rd. N., Guelph, Ontario, Canada N1H 6L4 Phone: 519-822-6870 Fax: 519-822-4999